

# 1.0 WIRELESS WIFI CONFIGURATION

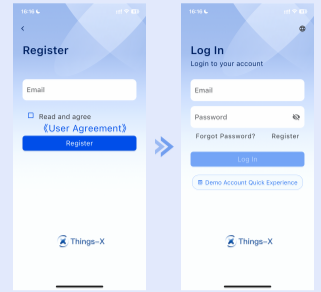
## 1.1 APP Download

Method 1: Scan the QR code on the right with your mobile device to download the app.  
Method 2: Search for "Things-X" in the App Store or Google Play Store to download the app.



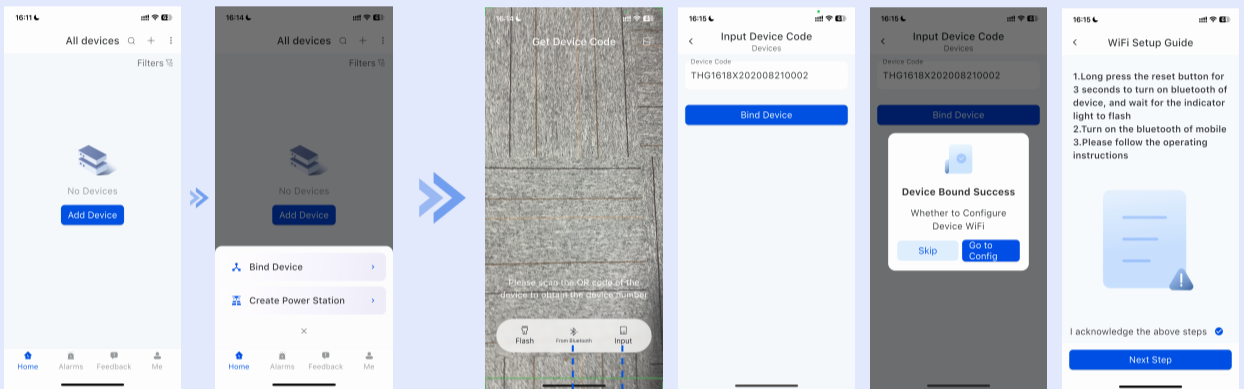
## 1.2 Registration and Login

On the app's login page, click the "Register" button and fill in the required information. The system will send an account activation link to your email. Click the link and set your password to complete the registration process.



# 2.0 ADDING DEVICES AND NETWORK CONFIGURATION

Click the "+" button in the upper right corner or the "Add Device" button in the center, then select the "Bind Device" button.



### Method 1: Scan the QR code

Scan the QR code on the device and click "Bind Device" to bind the device.

### Method 2: Bluetooth Binding

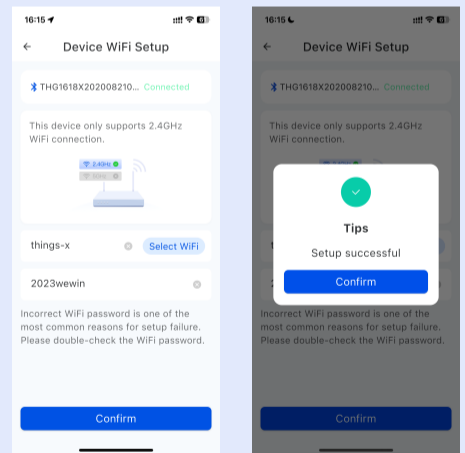
Click "from Bluetooth", and select the corresponding Bluetooth device.

### Method 3: Enter Device Code to Bind

Click "Input", input the device code, click "Bind Device".

On the configuration page, follow the instructions, click "Go to Config", and enter the Device WiFi Setup page. After connecting via Bluetooth, enter the WiFi username and password, then click "Confirm". The page will indicate a successful configuration.

**Note:** When performing network configuration, ensure the app has camera permissions and that your phone's Bluetooth is turned on.



# 3.0 COMMUNICATION FAULT ANALYSIS AND INDICATOR LIGHT STATUS

### Fault inspection:

- ① If the network configuration fails, verify that the WiFi username and password are correct and available.
- ② If the mobile phone cannot use the QR code scanner, check if the app has been granted authorization.

### Indicator Light Status:

- ① READY: Steady light indicates the communication stick is powered on.
- ② COM: Flashes when the communication stick is transmitting data with the device.
- ③ NET: Network indicator light.

### Other Operational Notes:

- ① Press and hold the Reload button for 5 seconds until the COM LED blinks rapidly, then release to reset the communication.