

1.0 WIRELESS WIFI CONFIGURATION

1.1 APP Download

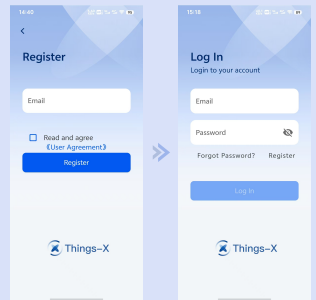
Method 1: Scan the QR code on the right with your mobile device to download the app.

Method 2: Search for "Things-X" in the App Store or Google Play Store to download the app.



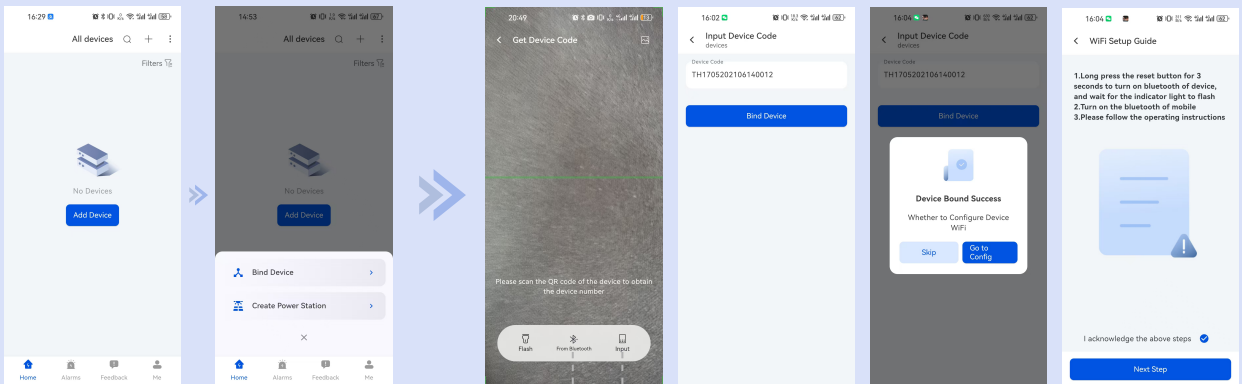
1.2 Registration and Login

On the app's login page, click the "Register" button and fill in the required information. The system will send an account activation link to your email. Click the link and set your password to complete the registration process.



2.0 ADDING DEVICES AND NETWORK CONFIGURATION

Click the "+" button in the upper right corner or the "Add Device" button in the center, then select the "Bind Device" button.



Method 1: Scan the QR code

Scan the QR code on the device and click "Bind Device" to bind the device.

Method 2: Bluetooth Binding

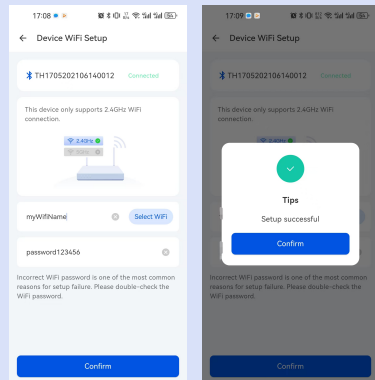
Click "from Bluetooth", and select the corresponding Bluetooth device.

Method 3: Enter Device Code to Bind

Click "Input", input the device code, click "Bind Device".

On the configuration page, follow the instructions, click "Go to Config", and enter the Device WiFi Setup page. After connecting via Bluetooth, enter the WiFi username and password, then click "Confirm". The page will indicate a successful configuration.

Note: When performing network configuration, ensure the app has camera permissions and that your phone's Bluetooth is turned on.



3.0 COMMUNICATION FAULT ANALYSIS AND INDICATOR LIGHT STATUS

Fault inspection:

- ① If the network configuration fails, verify that the WiFi username and password are correct and available.
- ② If the mobile phone cannot use the QR code scanner, check if the app has been granted authorization.

Indicator Light Status:

- ① READY: Steady light indicates the communication stick is powered on.
- ② COM: Flashes when the communication stick is transmitting data with the device.
- ③ NET: Network indicator light.

Other Operational Notes:

- ① Press and hold the Reload button for 5 seconds until the COM LED blinks rapidly, then release to reset the communication.

Intelligent Communication Stick User Manual

I. Product Overview

The Gospower Intelligent Communication Stick is a well-designed communication device with excellent performance. It integrates advanced communication technology and exquisite hardware architecture, aiming to provide users with efficient, stable and convenient data acquisition and transmission services. Whether it is in the field of industrial automation, intelligent monitoring systems, or other scenarios requiring data interaction, Gospower intelligent communication sticks can play an important role. With its powerful functions and excellent compatibility, it can seamlessly connect with a variety of terminal devices, achieve accurate data collection and smooth information transfer, and become your right hand in data processing work.

II. Technical Specifications

1. Support WIFI and Bluetooth V5.0 connection.
2. Excellent reception sensitivity.
3. Built-in 32-bit RISC CPU with FPU.
4. Storage includes 128 KB internal FLASH and 4MB external FLASH.
5. It can be powered by an 8P8C crystal head with a voltage of 5-12Vdc.
6. RS232/RS485 has multiple Settings.
7. Built-in antenna, network status, RS232/RS485 communication and READY indicator.

8. Working voltage 5~12Vdc, working power 2.5W, communication power consumption 30-500mA@5~12Vdc, standby power consumption 25mA@5Vdc.
9. The shell is made of PC945 material, size 66.5x24.2x11.8mm, weight about 10.2g.
10. Operating temperature is in the range of -40 to +85°C, storage temperature is the same, the highest sea Pull 4000 meters, support remote firmware upgrade. See Appendix for details.

III. Instructions

1. Preparations: Check the appearance and accessories, and connect the proper power supply.
2. Start collection and transmission: Observe the indicator to understand the working status.

The indicator status is as follows:

READY: Steady light indicates the communication stick is powered on.

COM: Flashes when the communication stick is transmitting data with the device.

NET: Network indicator light.

IV. Announcements

1. Follow prescribed working conditions.
2. Avoid harsh electromagnetic environment.
3. Periodically check the connection.

V. Communication Stick Technical Specifications

Parameters	Content
Model number	tahutx20250625
Wireless parameters	WiFi
Wireless communication	IEEE802 11b/g/n @2.4GHz
Bluetooth communication	Bluetooth V5.0
Sensitivity of reception	11g-6Mbps: -93dBm; 11g-54Mbps: -77dBm; 11n-MCS0: -93 dBm; BLE: -97dBm
CPU	32-bit RISC CPU with FPU (floating-point unit), DFS frequency 1MHz-192MHz
Internal FLASH	128 KB
External extended FLASH	4MB
Power supply	8P8C Plug (3/5-VCC, 4/6-GND), 5~12Vdc
RS485	8P8C Plug (7-A+8-B-)
RS232	8P8C Plug (1-RX+2-TX)
Antenna	Built-in antenna
Indicator light	Built-in three green LED lights: network status indicator, RS232/RS485 communication indicator, READY indicator light
Voltage of operation	5~12Vdc
Input power	2.5W
Communication power consumption	30-500mA@5~12Vdc
Standby power consumption	25mA@5Vdc
Shell	PC945 shell
Dimensions	66.5x24.2x11.8mm
Weight	About 10.2g
Operating temperature	-40°C~+85°C
Storage temperature	-40°C~+85°C
Highest altitude	4000
Firmware upgrade	Remote upgrade